

PART OF SEC. 29-30, T.7N., R.3E., S.L.B. & M.
EVERGREEN PARK SUBDIVISION NO. 1

TAXING UNIT: 520

IN WEBER COUNTY
SCALE 1" = 200'

SEE PAGE 39

N.E. COR. SEC. 29
T. 7N., R.3E.

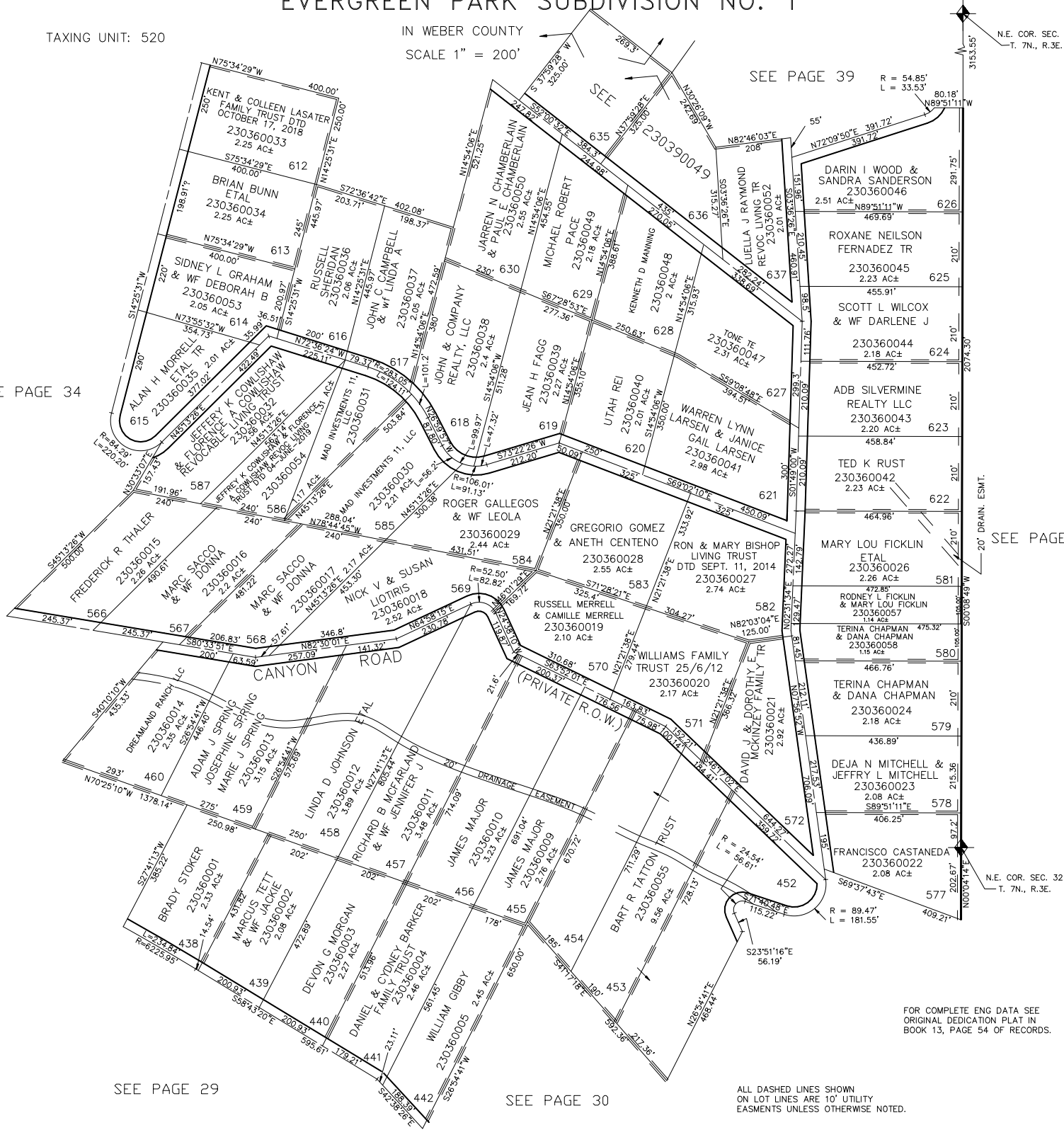
SEE PAGE 34

SEE PAGE 15

SEE PAGE 29

SEE PAGE 30

ALL DASHED LINES SHOWN
ON LOT LINES ARE 10' UTILITY
EASEMENTS UNLESS OTHERWISE NOTED.



FOR COMPLETE ENG DATA SEE
ORIGINAL DEDICATION PLAT IN
BOOK 13, PAGE 54 OF RECORDS.